

# WORLD LIFT

# S SERIES

## Introducing the Ricon Commercial S-Series® Lifts

The **ALL NEW** Bariatric Split Platforms and Stretcher Lift designs - elevate the industry standard for excellence.



### RICON LEADS THE WAY IN THE REDUCTION OF CROSS CONTAMINATION WITHIN THE PATIENT TRANSFER SERVICE

Our Commercial S-Series lifts offer Individual Vehicle Approval (IVA) compliance as standard with and without bariatric option. Available in fully automatic solid or split platform design with the security of the industry-leading Ricon Safety Zone, fitted as standard. Compact and simple to operate, the innovative S-Series lift design provides unobstructed access and egress to vehicles.

### PERFORMANCE, RELIABILITY AND VALUE

Ricon S-Series wheelchair lifts formed the catalyst, setting the industry standard for performance, value and ease of use. These innovative design features include:

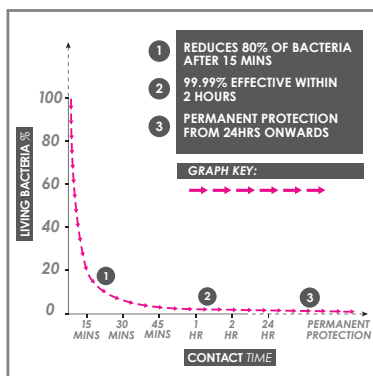
- Easy operation and maintenance
- Durable design for long lift life
- 1600mm designed platform accommodates stretcher or additional attendee
- Major suppliers to Ambulance Service and Local Authority Schemes
- Conforms to ISO 22196:2011
- ADA Compliant
- 5 Year Limited Warranty



## The Commercial S-Series® Wheelchair Lift

### Features:

- Industry-leading Ricon Safety Zone: Combines front and rear roll stops and handrails, secures passengers during lift operation.
- A unique handrail coating provides a release of ions which in turn safely inhibits microbial growth.
- This product has been successfully tested against over 50 common organisms; Typically MRSA, E-Coli, Salmonella, Listeria, Pseudomonas and Campylobacter.
- Conforms to ISO22196:2011.
- Powerful hydraulic pump assures smooth, stable operation.
- Pre-lubricated bearings at all major pivot points for long-term durability.
- All steel construction with high gloss, polyester powder coat finish resists corrosion.
- Bariatric lifts rated at 500kg.
- ADA regulation compliant.
- Available with built in alarms and Ski Wheels.
- 5-year Limited Warranty.



### Split Platform Features:

- Exclusive split-platform design folds vertically enabling clear access to vehicle interior.
- The driver's line of sight is unobstructed for optimum safety.



**TOP-MOUNTED MAGNETIC HAND CONTROL PENDANT** – with multiple stow points and convenient coiled cord. Can be attached directly to the frame when lift is stowed or operating.



**CERTIFICATE OF INITIAL FITNESS (COIF) EMERGENCY RELEASE** - Optional COIF release mechanism complies with schedule 6 of the 1986 construction and use regulations, allowing full lift deployment for rapid vehicle evacuation in the event of an emergency.

**MANUAL BACKUP SYSTEM** – hand pump mechanism provides manual lift operation in case of power loss.



**AUTOMATIC INBOARD ROLL-STOP** – features quiet patented Sto-Loc self-adjusting mechanism with built in fail safe features.



**OUTER ROLL-STOP SWITCH** – limits platform travel if not locked into position.



**TIGHTER MESH NON SKID PLATFORM** – for greater rigidity and improved performance.



**OCCUPANT RESTRAINT BELT SYSTEM** – Patented fully interlocked Ricon occupant restraint belt system. Combines with dual handrails, inner and outer roll-stop barriers and side rails for industry-leading passenger security.

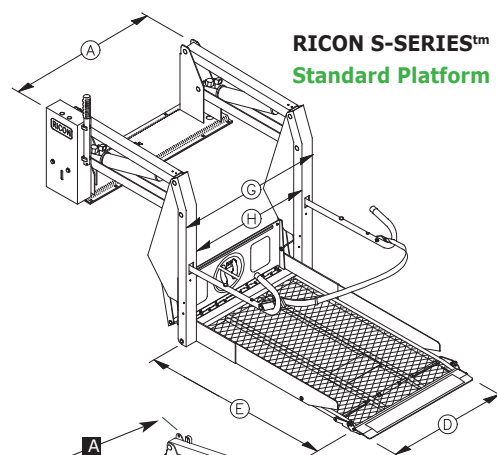
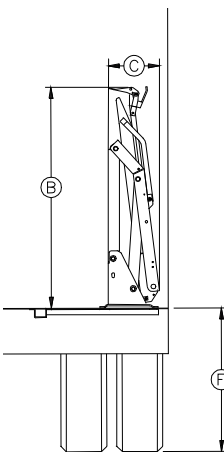


**ANTIMICROBIAL COATING** – A unique handrail coating provides a release of ions which in turn safely inhibits microbial growth.

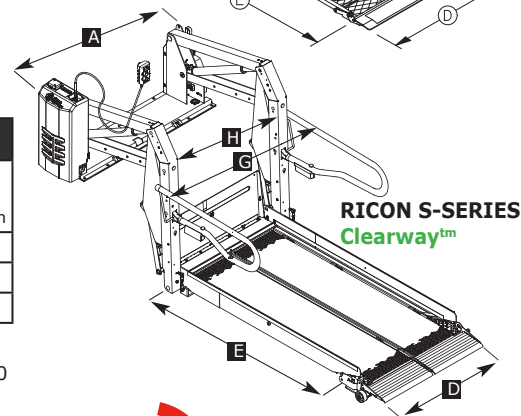
**SKI WHEELS**- can be provided as an optional extra.

**LIFT WEIGHTS** – between 154-168kg.

**EXCLUSIVE SPLIT-PLATFORM (SPLIT PLATFORM)** - allowing unobstructed access upon exit and entry whether or not the lift is deployed.



**RICON S-SERIES™ Standard Platform**



**RICON S-SERIES Clearway™**

### S-SERIES™ LIFT: Models S2014-S2038

DIMENSIONS - mm		A	B	C	D	E	F	G	H	I
MODEL	Platform Type	Stationary frame width	Height (folded)	Installation depth (folded)	Usable platform width	Usable platform length	Floor-to-ground travel	Traveling frame width	Clear entry width	Walk Through Lift Width
S2014	Solid	1384	1600	368	1003	1499	1067	1219	1029	N/A
S2036	Split	1194	1397	483	813	1300	1067	1105	838	495
S2038	Split	1194	1778	483	813	1600	1067	1105	838	495

### National Importer and Distributor



156 Beringarra Ave, MALAGA WA 6090  
 email: kevrek@kevrek.com.au  
 website: www.kevrek.com.au  
 Ph: (08) 9248 5922 Fax: (08) 9248 5966

Copyright 2010 Ricon Corporation. Ricon, S-Series, K-Series, Clearway, Klearvue and Sto-Loc are trademarks of Ricon Corporation. Ricon Corp. and Kevrek Australia reserves the right to discontinue models or options at any time or change specifications, materials, equipment, or pricing without notice and without incurring obligation.



**Ricon**  
 A Wabtec company